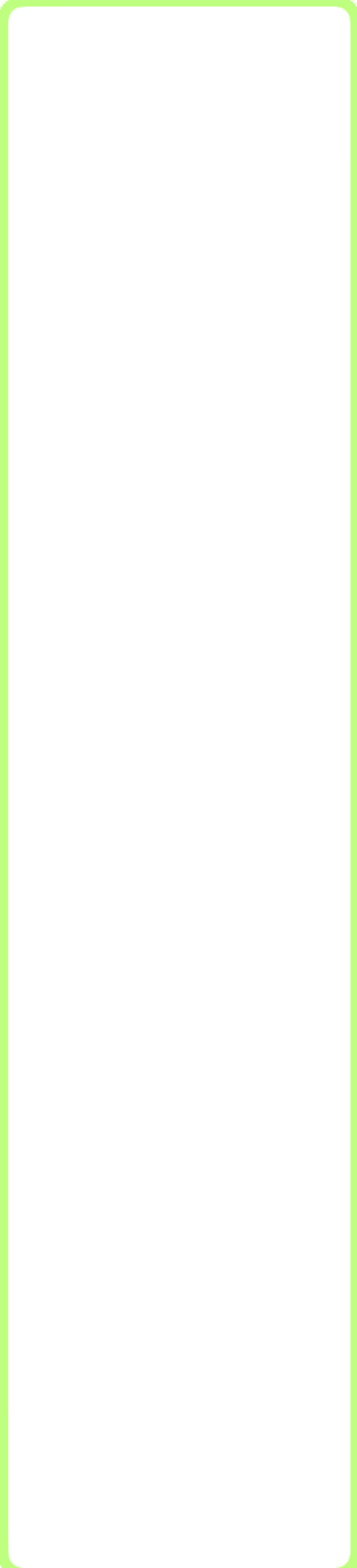
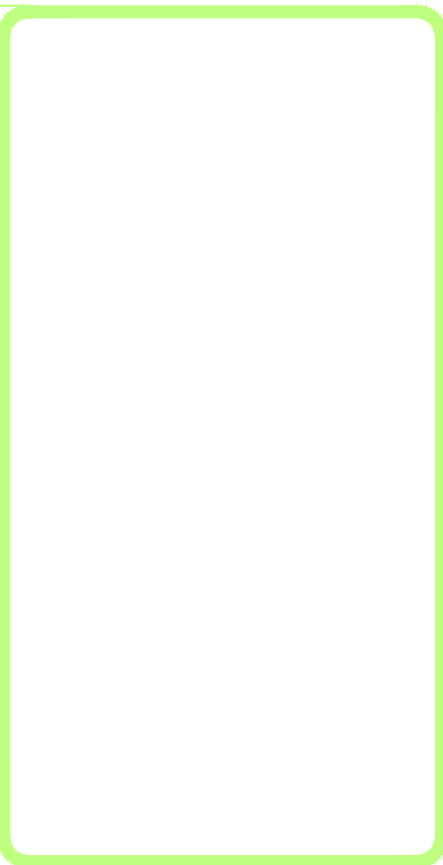
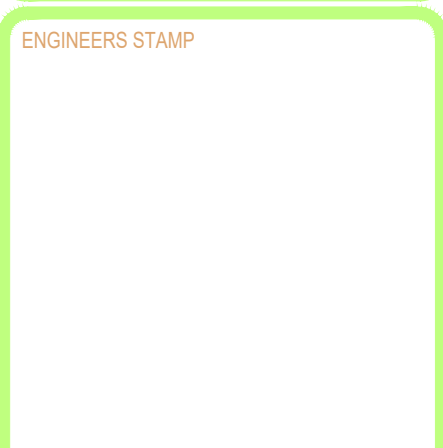


3rd FLOOR PLAN

SCALE: 1/8" = 1'-0"



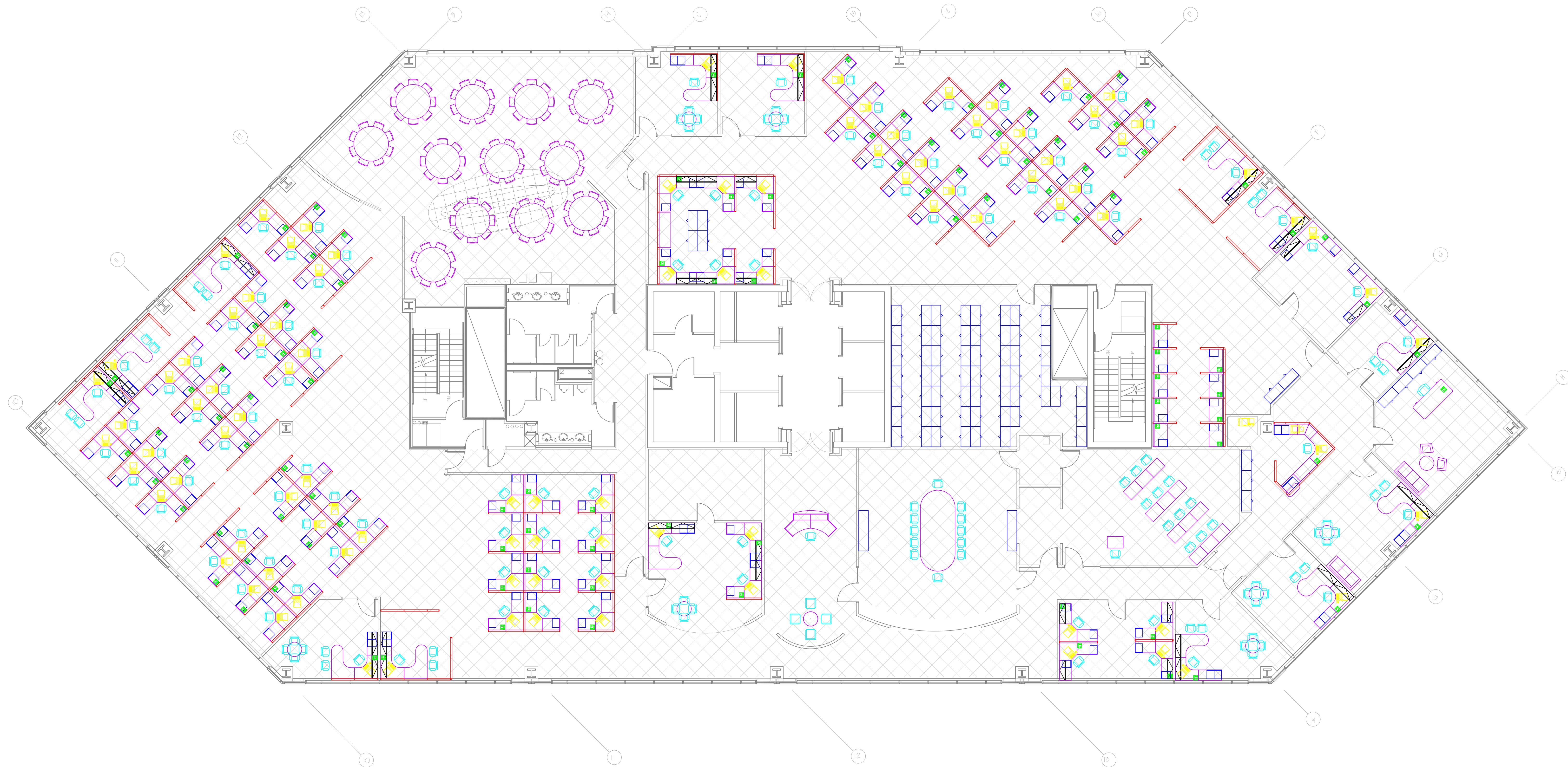
No.	DATE	DESCRIPTION



DESIGNED BY	DJM
DRAWN BY	DJM
CHECKED BY	GFC
DATE	02/17/26
GCC PROJECT NO.	00201-2026
SHEET NO.	

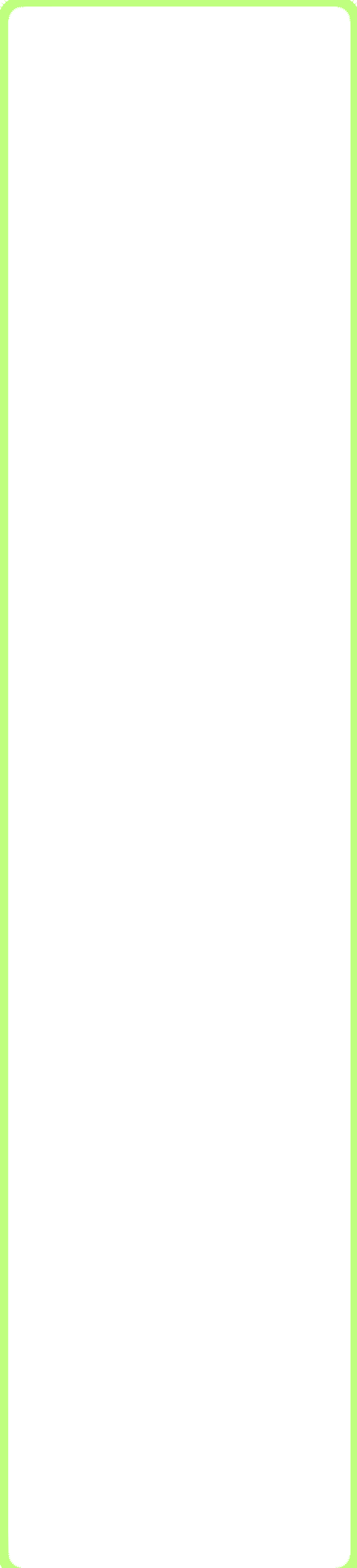
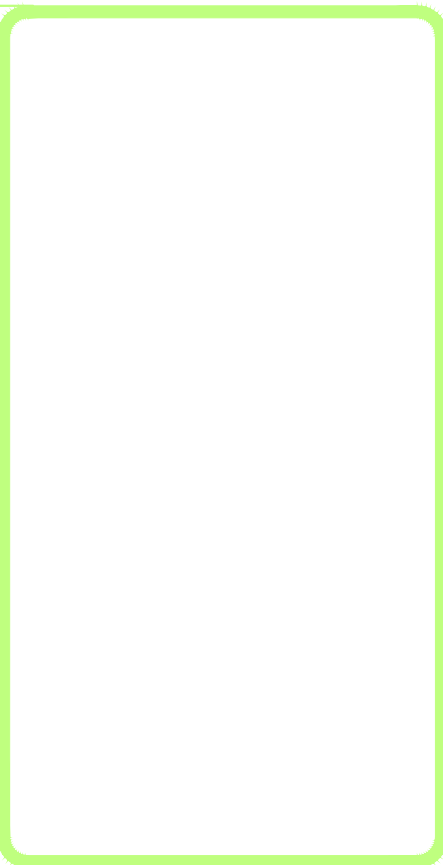
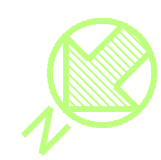


3TA-1



3rd FLOOR – FURNITURE PLAN

SCALE: 1/8" = 1'-0"



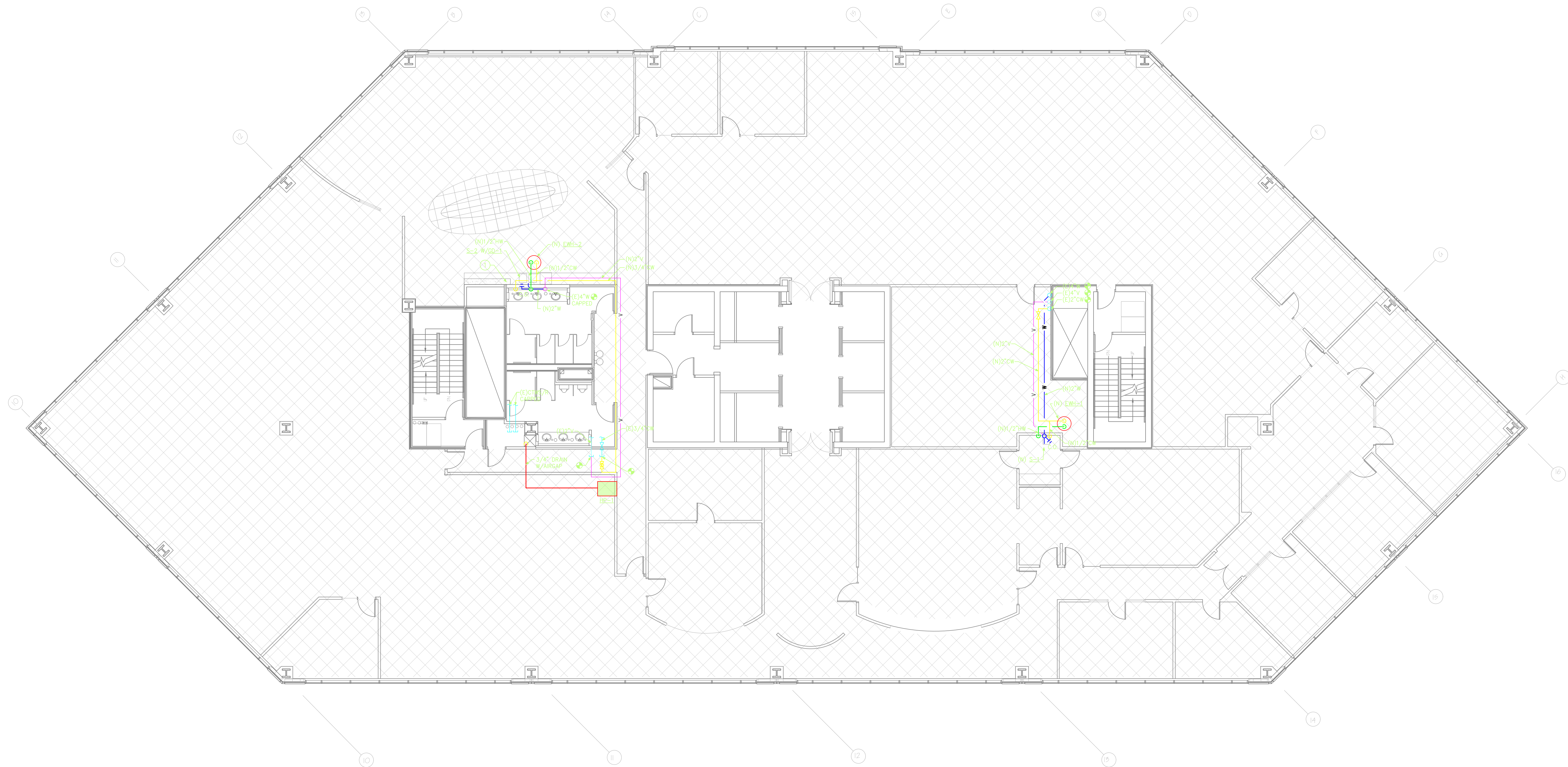
No.	DATE	DESCRIPTION

ENGINEER'S STAMP

DESIGNED BY: DJM
 DRAWN BY: DJM
 CHECKED BY: GFC
 DATE: 02/17/26
 GCC PROJECT NO: 00201-2026
 SHEET NO:



3TA-2



3rd FLOOR PLUMBING PLAN

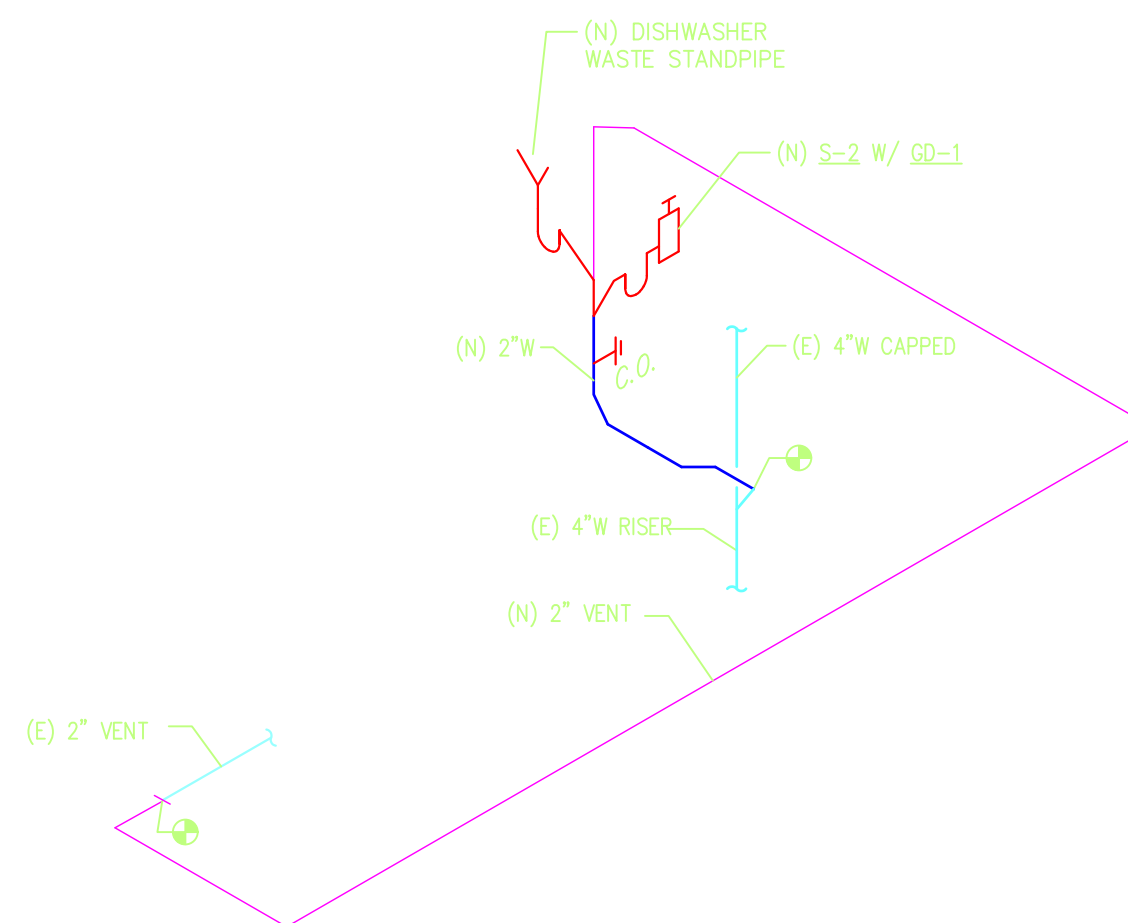
SCALE: 1/8" = 1'-0"
 NOTE: LINES IN BOLD-FACE INDICATE NEW, LINES IN LIGHT-FACE INDICATE EXISTING.

PLUMBING DETAIL NOTES:

- 1 PROVIDE 3/8" VALVED COPPER HOT WATER LINE AND WASTE STANDPIPE WITH AIR GAP FITTING FOR CONNECTION TO TENANT-FURNISHED DISHWASHER, AS REQUIRED. COORDINATE WITH ARCHITECTURAL DRAWINGS FOR EXACT LOCATION PRIOR TO ROUGH-IN.

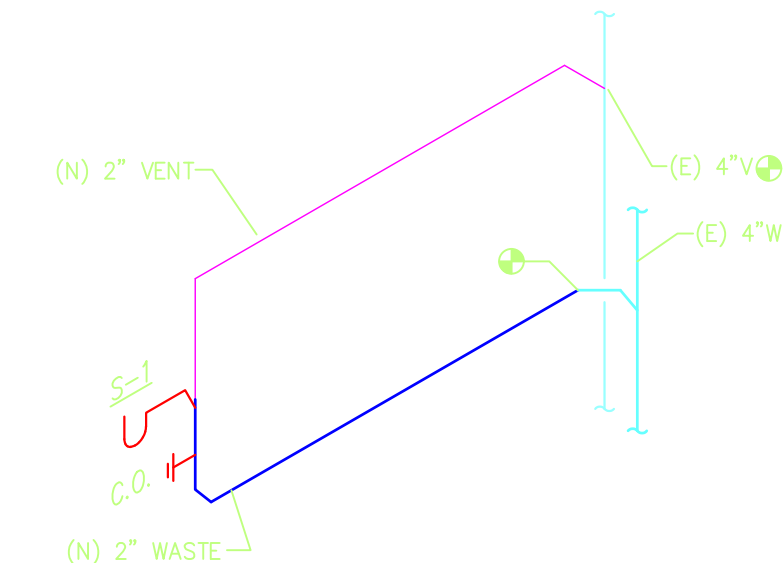
PLUMBING EQUIPMENT LIST:

- S=1 NEW JUST MODEL NO. SWB-1919-A-GR 5-1/2" DEEP STAINLESS STEEL SINGLE COMPARTMENT SINK WITH REAR DRAIN. COMPLETE WITH FLEXIBLE SUPPLIES INCLUDING STOPS, BRANCH TAIL-PIECE WITH DIRECTIONAL TEE TO ACCEPT PAN DRAIN DISCHARGE, P-TRAP, CRUMB CUP/STOPPER, AND DELTA MODEL 2672944 GOOSENECK FAUCET WITH 4" LONG WRIST BLADE HANDLES.
- S=2 NEW JUST MODEL NO. DBW-2133-A-GR 5-1/2" DEEP STAINLESS STEEL DOUBLE COMPARTMENT SINK WITH REAR DRAIN. COMPLETE WITH FLEXIBLE SUPPLIES INCLUDING STOPS, BRANCH TAIL-PIECE WITH DIRECTIONAL TEE TO ACCEPT PAN DRAIN DISCHARGE, P-TRAP, CRUMB CUP/STOPPER, AND DELTA MODEL 2672944 GOOSENECK FAUCET WITH 4" LONG WRIST BLADE HANDLES.
- EMB=1 NEW STATE MODEL NO. OPE-6-10MSA ELECTRIC WATER HEATER, 6 GALLON CAPACITY, 7 GPH RECOVERY AT 90°F RISE, 1500 WATTS, 277V/1PH, 18" HIGH X 16" DIAMETER. INSTALL WATER HEATER IN CEILING SPACE PER DETAIL. PIPE PAN DRAIN TO DIRECTIONAL TEE ON SINK BRANCH TAIL-PIECE. PROVIDE SHUT-OFF VALVES AND DIELECTRIC UNIONS AT THE WATER HEATER.
- EMB=2 NEW STATE MODEL NO. OPE-20-10MSA ELECTRIC WATER HEATER, 20 GALLON CAPACITY, 7 GPH RECOVERY AT 90°F RISE, 1500 WATTS, 277V/1PH, 22-1/4" HIGH X 22" DIAMETER. INSTALL WATER HEATER IN CEILING SPACE PER DETAIL. PIPE PAN DRAIN TO DIRECTIONAL TEE ON SINK BRANCH TAIL-PIECE. PROVIDE SHUT-OFF VALVES AND DIELECTRIC UNIONS AT THE WATER HEATER.



N-E PARTIAL WASTE & VENT ISOMETRIC

SCALE: N.T.S.



S-E PARTIAL WASTE & VENT ISOMETRIC

SCALE: N.T.S.



NO.	DATE	DESCRIPTION

ENGINEER'S STAMP	
DESIGNED BY	DJM
DRAWN BY	DJM
CHECKED BY	GFC
DATE	02/17/26
GCC PROJECT NO.	00201-2026
SHEET NO.	3TM-2